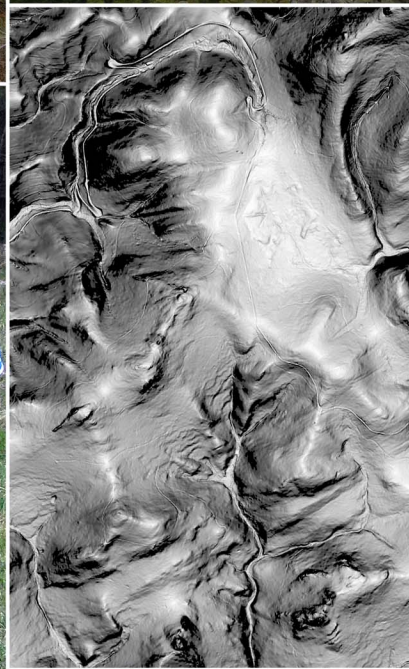
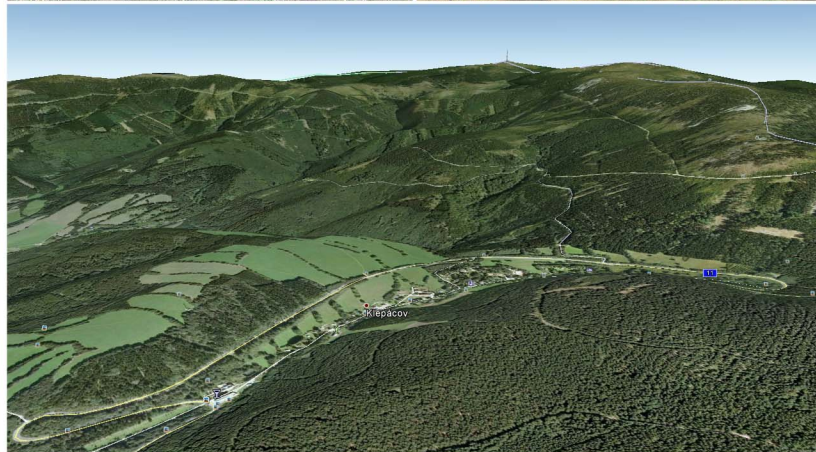


**CZECH ORIENTEERING CHAMPIONSHIP - LONG DISTANCE  
WORLD RANKING EVENT  
SKŘÍTEK, KLEPÁČOV  
2015, SEPTEMBER 26 - 27**

[www.ksu.cz/mcr2015](http://www.ksu.cz/mcr2015)



# INVITATION





# CZECH ORIENTEERING CHAMPIONSHIP 2015 – LONG DISTANCE WORLD RANKING EVENT

## INVITATION

Šumperk, December 15, 2014

Dear O-friends,

on behalf of Klub vytrvalostních sportů Šumperk we would like to invite you to the Czech Orienteering Championship - Long Distance, which we organize in the Jeseníky protected landscape area in 2015.

We would like to give you an opportunity to participate in the competition in a beautiful terrain of the Jeseníky mountains, where the best Czech cartographers will prepare top quality maps for you and really challenging tracks will prove your physical condition and mental skills.

Please note, that the European Orienteering Championship 2016 with the center in town Jeseník will be held close to locality of our race – also in the Jeseníky mountains.

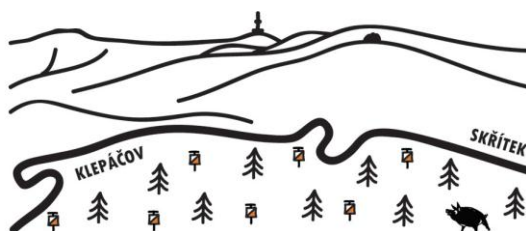
Dear O-friends, we wish you all the best in 2015 and we are looking forward to see you at Czech Orienteering Championship 2015 - Long Distance!

For organizing team

Petr Turczer  
Main referee

Pavel Paloncý  
Event director

**CZECH O-CHAMPIONSHIP LONG**  
**SEPTEMBER 26 - 27, 2015**  
**KLUB VYTRVALOSTNÍCH SPORTŮ ŠUMPERK**



## MAIN INFORMATION

EVENT	Czech Orienteering Championship 2015 - Long Distance World Ranking Event
ORGANISER	Czech orienteering federation ( <a href="http://www.orientacnisporty.cz">http://www.orientacnisporty.cz</a> ) and Klub vytrvalostních sportů Šumperk ( <a href="http://www.ksu.cz">www.ksu.cz</a> )
DATE	<b>2015, September 26 – 27</b>
EVENT CENTRE	Ski area <b>Klepáčov</b> ; 50°0'42.653"N, 17°8'37.484"E; <a href="#">map</a>
PROGRAMME	Sat, September 26 ... Qualification Sun, September 27 ... Final
TERRAIN	Hilly mountain forest in the Jeseníky protected landscape area. Altitude is around 600 - 960 above sea level. Runability can be different depending on a part of the forest - ranging from very good to very difficult. Forest is mostly clean without seasonal undergrowth. Mostly good visibility. Irregular network of paths, tracks and roads has moderate density. The terrain is very rich on the different kind of details like rocks, boulders, knolls, depressions, runnable marshes, thickets, clearings etc.
MAP	1 : 15 000, E=5m, ISOM 2000, September 2015
PUNCHING SYSTEM	SportIdent
EMBARGOED AREA	Area bounded by the village Rudoltice, settlement Klepáčov, gap Skřítek, crossroad Rabštejn and crossroad Hvězda.
BULLETIN No. 1	Will be issued in May 2015.
EVENT OFFICIALS	Event director                      Pavel Paloncý Main referee                         Petr Turczer IOF Event Adviser                Adam Zítka
WEB	<a href="http://www.ksu.cz/mcr2015">www.ksu.cz/mcr2015</a>
INFORMATION	Petr Turczer, +420 739 324 013, <a href="mailto:mcr2015@ksu.cz">mcr2015@ksu.cz</a>

